

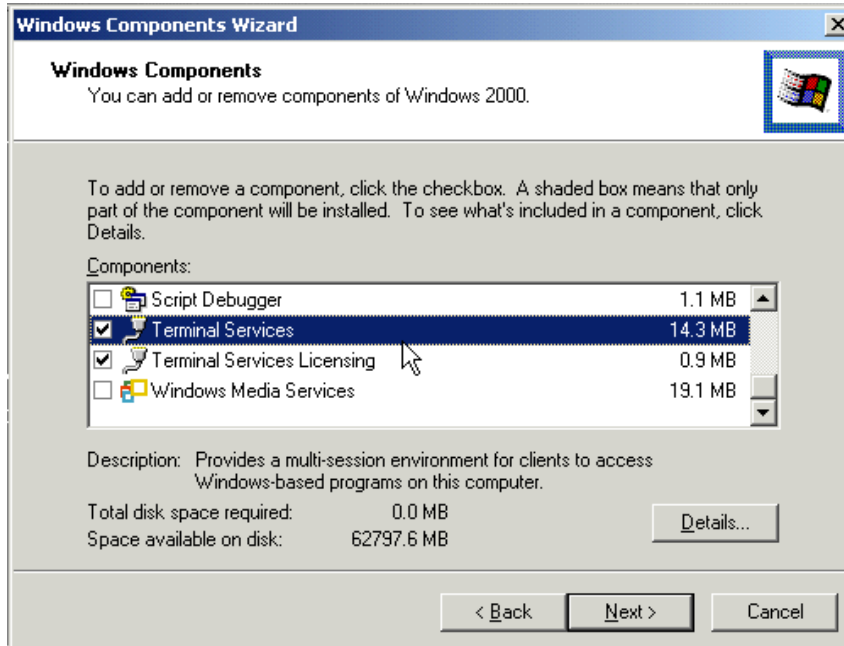


# **Print2PDF 8.0**

Installation Guide for Windows Terminal Services

## Using Windows Terminal Services

Print2PDF Server Edition may be installed and used on Windows Server 2000/2003/2008 running Terminal Services in either Application Mode or Remote Administration Mode. Be aware that Print2PDF will need to be reinstalled if the Terminal Services mode has been changed, so a commitment to one mode is recommended before installing.



## Enabling Windows 2000 Terminal Services

Windows 2000 Terminal Services should be set to run in **Application server mode**. Print2PDF has been successfully tested using the permission setting **Permissions compatible with Windows 2000 Users**.

For a step-by-step procedure to enable Terminal Services, see the Microsoft web site:

[http://www.microsoft.com/windows2000/en/server/help/ts\\_set\\_h\\_020.htm](http://www.microsoft.com/windows2000/en/server/help/ts_set_h_020.htm)

Other resources are available on the Microsoft Windows 2000 Terminal Services web site:

<http://www.microsoft.com/windows2000/technologies/terminal/>

## Enabling Windows 2003 Terminal Services

Windows 2003 Terminal Services should be set to run in **Application server mode**. Print2PDF has been successfully tested using the permission setting **Full Security**.

For a step-by-step procedure to enable Terminal Services, see the Microsoft web site:

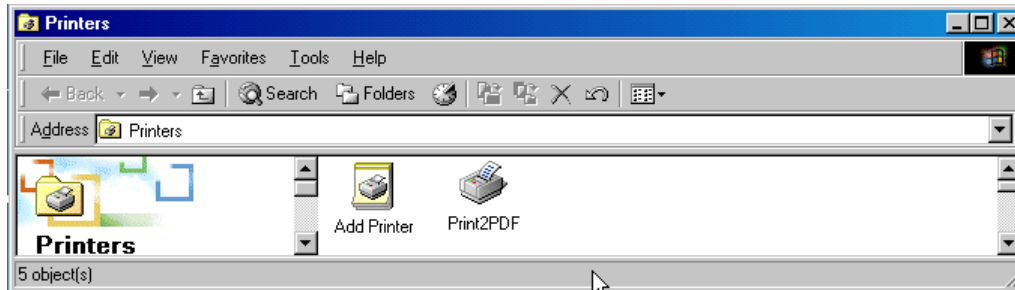
<http://www.microsoft.com/windowsserver2003/techinfo/overview/quickstart.msp>

Other resources are available on the Microsoft Windows 2000 Terminal Services web site:

<http://www.microsoft.com/windowsserver2003/technologies/terminalservices/>

## Installing Print2PDF Server Edition

1. Install the software as normal using an **Administrator** account from the server's **console** or a **Terminal Server session**.
2. After installation, the printer will appear as a normal printer to all users.
3. Register the software using the **Register** icon located in the Print2PDF Program Group. Only **Administrator** accounts may access the registration program.



## Terminal Services Application Compatibility

The Print2PDF printer requires the terminate and stay resident (TSR) program **PrnPack.exe** to function properly. Generally, when a user connects, the PrnPack.exe process will start by the following registry key:

```
HKEY_LOCAL_MACHINE\SOFTWARE\Microsoft\Windows\CurrentVersion\Run
```

When the above registry key is not executed when a user logs into the server, the following will be required for Print2PDF to function:

1. Open either your central user logon script or the individual **USRLOGON.CMD** scripts for this server (found in the %SystemRoot%\system32 directory).
2. Depending on your architecture, add the following to the top of the script:

### 32-bit (Print2PDF is installed and activated on this server)

```
START /D "%ProgramFiles%\Software602\Print2PDF\" /I /B Print2PDF.exe /server
```

### 32-bit (Print2PDF is installed as a client on this server)

```
START /D "%SystemRoot%\system32\spool\drivers\w32x86\3\" /I /B Print2PDF.exe /server
```

### 64-bit (Print2PDF is installed and activated on this server)

```
START /D "%ProgramFiles% (x86)\Software602\Print2PDF\" /I /B Print2PDF.exe /server
```

### 64-bit (Print2PDF is installed as a client on this server)

```
START /D "%SystemRoot%\system32\spool\drivers\x64\3\" /I /B Print2PDF.exe /server
```

3. Save the file.